

# CERTIFICATE OF ANALYSIS

## ISO/IEC 17025:2017 ACCREDITATION #103104

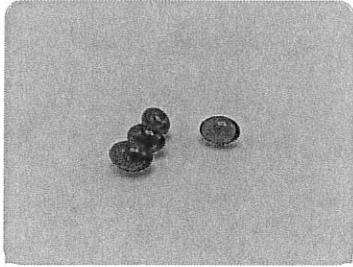


Order #: 40929  
 Order Name: Soft Gels  
 Batch#: 110619  
 Received: 11/06/2019  
 Completed: 11/08/2019

New Hope Labs  
 1951 NW 7th Ave STE 600  
 Miami FL, 33136



### Sample



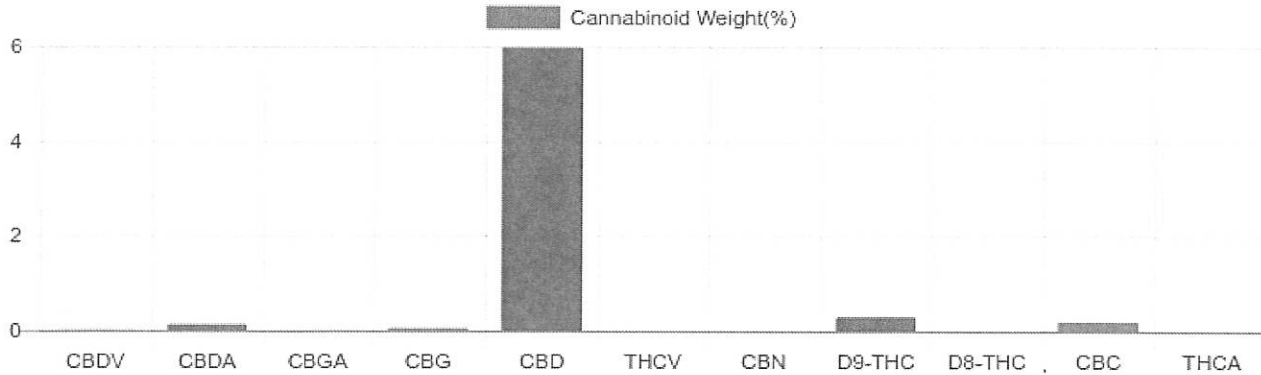
<b>0.292%</b> D9-THC	<b>6.090%</b> Total CBD
<b>32.2 mg</b> Cannabinoids per unit	<b>29.2 mg</b> CBD per unit

1 unit = 0.480 grams per unit x Cannabinoid concentration

### Cannabinoids Test

SHIMADZU INTEGRATED UPLC-PDA  
 GSL SOP 400      PREPARED: 11/06/2019 16:53:01      UPLOADED: 11/07/2019 07:53:11

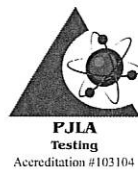
Cannabinoids	LOQ	weight(%)	mg/g	mg/unit
D9-THC	10 PPM	0.292%	2.923	1.4
THCA	10 PPM	N/D	N/D	N/D
CBD	10 PPM	5.975%	59.748	28.7
CBDA	20 PPM	0.131%	1.309	0.6
CBDV	20 PPM	0.013%	0.126	0.1
CBC	10 PPM	0.198%	1.980	1.0
CBN	10 PPM	N/D	N/D	N/D
CBG	10 PPM	0.057%	0.570	0.3
CBGA	20 PPM	0.017%	0.175	0.1
D8-THC	10 PPM	N/D	N/D	N/D
THCV	10 PPM	N/D	N/D	N/D
TOTAL D9-THC		0.292%	0.292%	1.4
TOTAL CBD*		6.090%	60.896	29.2
TOTAL CANNABINOIDS		6.683%	66.831	32.2



Reporting Limit 10 ppm  
 \*Total CBD = CBD + CBDA x 0.877  
 N/D - Not Detected, B/LOQ - Below Limit of Quantification



4001 SW 47th Avenue Suite 208  
 Davie, FL 33314  
 1-833-TEST-CBD  
 info@greenscientificlabs.com



\_\_\_\_\_  
 Dr. Andrew Hall, Ph.D., CSO & Lab Director

Green Scientific Labs uses its best efforts to deliver high quality results and to verify that the data contained therein are based on sound scientific judgment and levels listed are guidelines only and all data was reported based on standard laboratory procedures and deviations. However Green Scientific Labs makes no warranties or claims to that effect and further shall not be liable for any damage or misrepresentation that may result from the use or misuse of the data contained herein in any way. Further, Green Scientific Labs makes no claims regarding representations of the analyzed sample to the larger batch from which it was taken. Data and information in this report are intended solely for the individual(s) for whom samples were submitted and as part of our strict confidentiality policy, Green Scientific Labs can only discuss results with the original client of record.

# CERTIFICATE OF ANALYSIS

## ISO/IEC 17025:2017 ACCREDITATION #103104



Order #: 40929  
 Order Name: Soft Gels  
 Batch#: 110619  
 Received: 11/06/2019  
 Completed: 11/08/2019

New Hope Labs  
 1951 NW 7th Ave STE 600  
 Miami FL, 33136



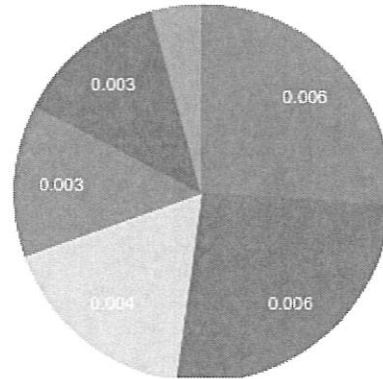
### TERPENES: TOTAL (0.023%)

Headspace GCMS - Shimadzu GCMS QP2020 with HS20

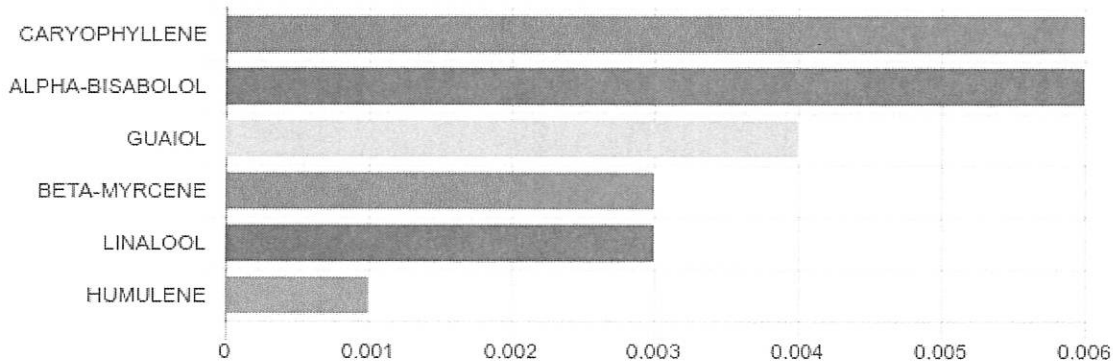
GSL SOP 404  
 Prepared: 11/06/2019 15:13:03  
 Uploaded: 11/08/2019 07:02:09

Terpene	Results (%)	LOQ (%)	LOD (%)
ALPHA-BISABOLOL	B/LOQ	0.0067%	0.0063%
BETA-MYRCENE	B/LOQ	0.0067%	0.0063%
CARYOPHYLLENE	B/LOQ	0.0067%	0.0063%
GUAIOL	B/LOQ	0.0067%	0.0063%
HUMULENE	B/LOQ	0.0067%	0.0063%
LINALOOL	B/LOQ	0.0067%	0.0063%

### Terpenes Breakdown



### Top Terpenes Results:

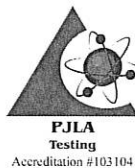


### Tested for but not present:

ALPHA-PINENE, CAMPHENE, BETA-PINENE, 3-CARENE, ALPHA-TERPINENE, TRANS-BETA-OCIMENE, LIMONENE, P-CYMENE, CIS-BETA-OCIMENE, EUCALYPTOL, GAMMA-TERPINENE, TERPINOLENE, ISOPULEGOL, GERANIOL, CIS-NEROLIDOL, TRANS-NEROLIDOL, CARYOPHYLLENE OXIDE



4001 SW 47th Avenue Suite 208  
 Davie, FL 33314  
 1-833-TEST-CBD  
 info@greenscientificlabs.com



*Andrew Hall*  
 Dr. Andrew Hall, Ph.D., CSO & Lab Director

Green Scientific Labs uses its best efforts to deliver high quality results and to verify that the data contained therein are based on sound scientific judgment and levels listed are guidelines only and all data was reported based on standard laboratory procedures and deviations. However Green Scientific Labs makes no warranties or claims to that effect and further shall not be liable for any damage or misrepresentation that may result from the use or misuse of the data contained herein in any way. Further, Green Scientific Labs makes no claims regarding representations of the analyzed sample to the larger batch from which it was taken. Data and information in this report are intended solely for the individual(s) for whom samples were submitted and as part of our strict confidentiality policy, Green Scientific Labs can only discuss results with the original client of record.